

## How To Connect to another computer using Window XP and Windows Live Messenger

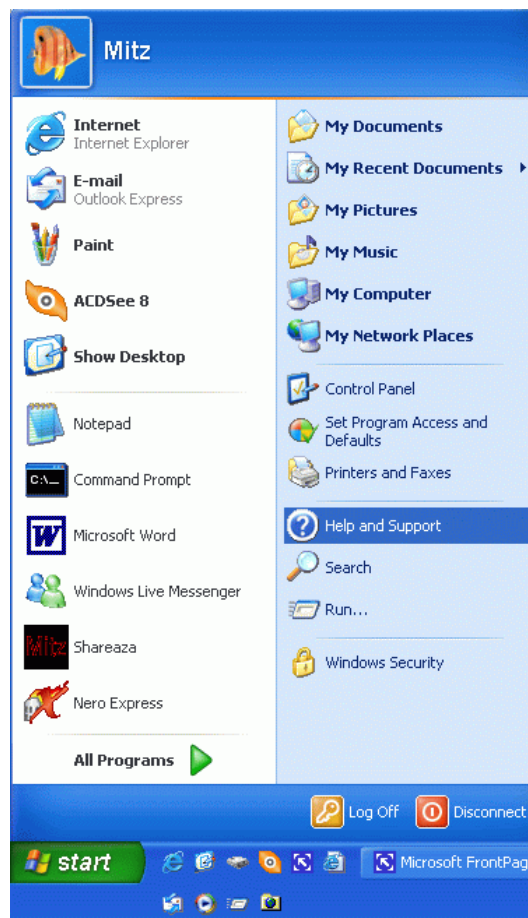
If you have Windows XP it has built in **remote access software** that helps you connect to a friend's computer, by invitation, to help them by taking **remote control** of their computer system. This means you could be in the USA and be helping your friend in Australia to find a solution to his or her computer problems. The **technology** to gain **remote access** to basically anyone's computer is available on most computer users start menu. I regularly give my friends **computer support** from the comfort of my own home.

### What you need to use the Help and Support tool

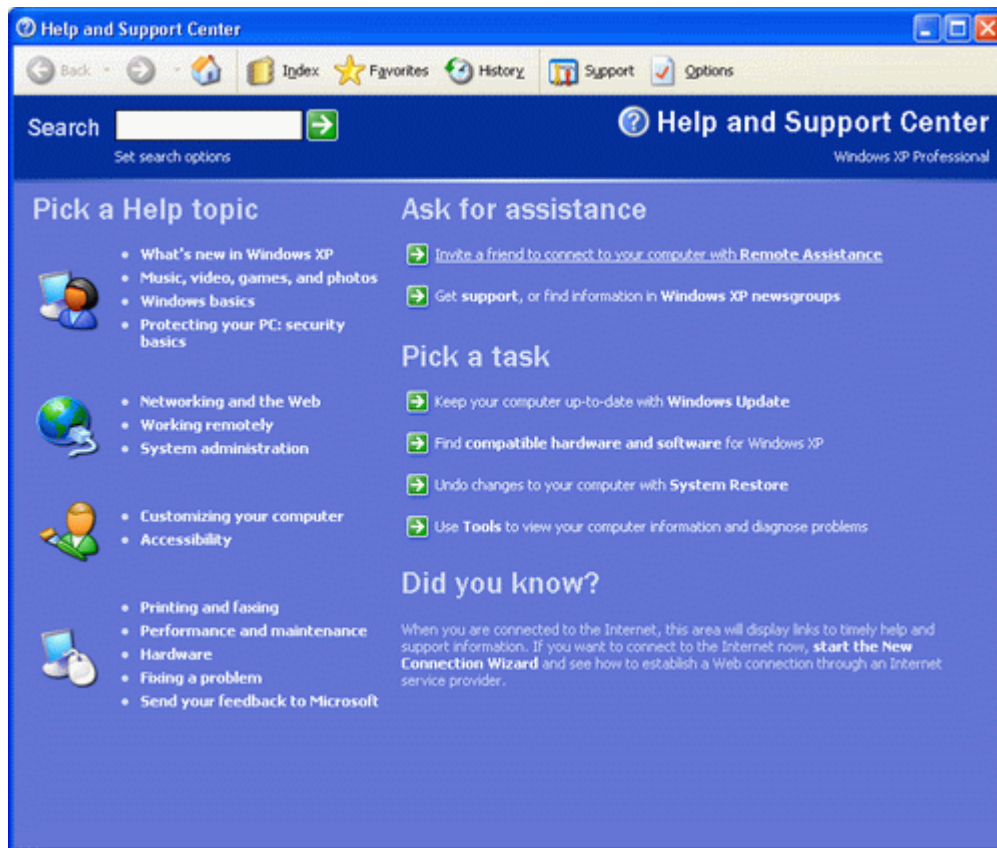
1. An internet connection
2. Windows Xp on both computers
3. An email address or be signed into Windows Live messenger.

### The easiest way to connect

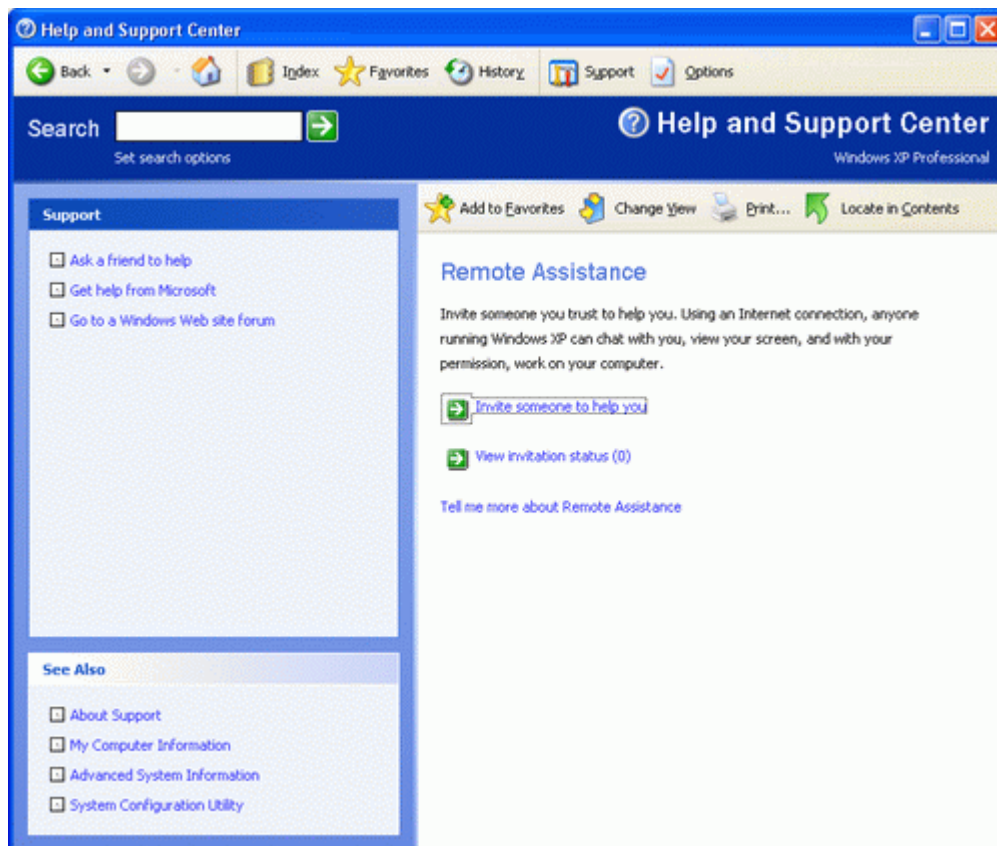
1. Sign in to **Windows Live Messenger** and **have your friend do the same thing**.
2. Go to the start menu and choose **Help and Support** (shown below) Just the computer user that wants to invite does this.



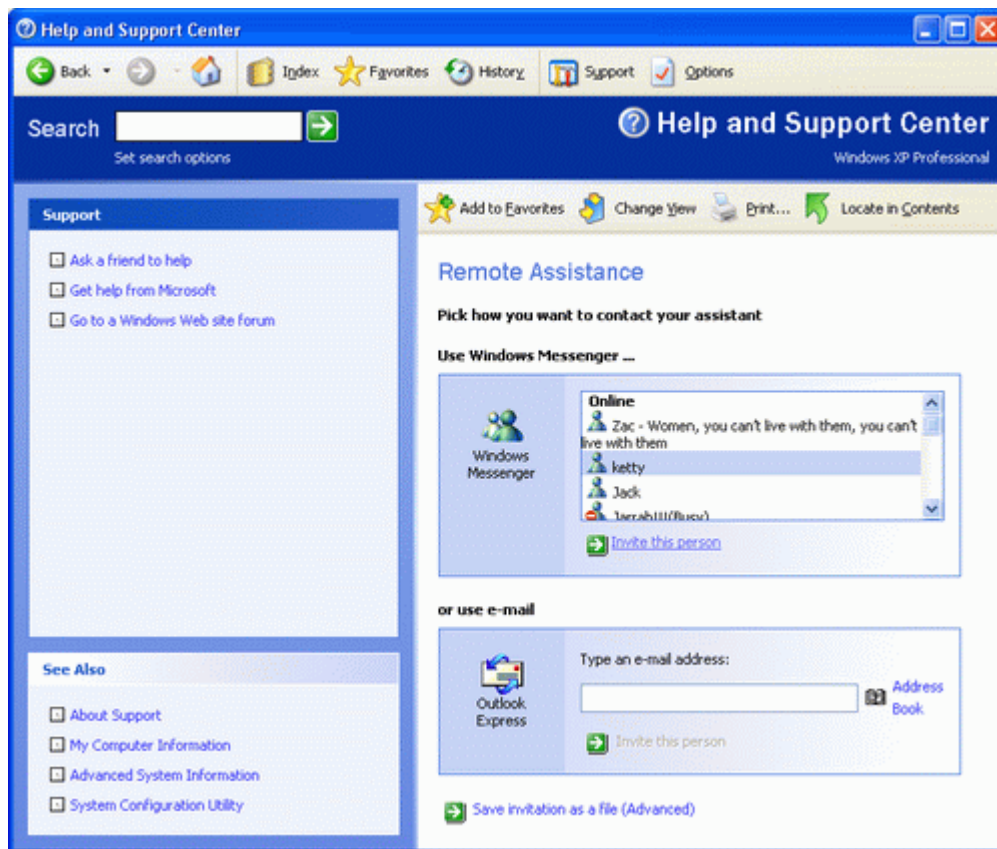
3. The Help and Support Center will appear. Click on **Invite a Friend to connect to your computer with Remote Assistance**. Located under the **Ask For Assistance menu**.



4. Then press *Invite someone to help you*.



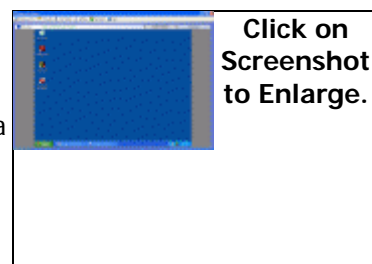
The window below will appear.



5. Choose your **friends name** from the Windows Messenger contact list.
6. Click on **Invite this person**.
7. This will allow your friend to **see your desktop**. If they want to control your they must press the **Take control** button and the other person must agree by pressing **ok**.
8. Check out the Screenshot below...This is what I see when I am in control of my friends computer...I can go on the internet or read their emails etc..

#### Reasons to use Windows remote help and support

- Your problem is so minor, you do not want to bother an **IT support person**.
- You cannot afford an **It technician**, and your know a **computer whiz**.
- You have already rang **software support** or your **internet service provider** and they could not help
- You constantly need **desktop computer help**



#### Notes:

- If you close the **Remote Assistance Window** it will disconnect. And you will have to start again if you want to connect.
- Don't worry if it is a bit slow because that is normal.
- You can also connect using an email address. The invitation is sent through email.

#### Recent Articles

- **Remote Desktop** How to connect to other computers on your Network **NEW TODAY**
- **Sharing Files** How to share files with other computers on your Network **HOT !!!!**
- **Computer Name** Where is my computer name? **NEW TODAY**

- **IP Address** How to view your IP Address  
Browse Tips4pc.com for more free computer education articles

**About the Author**

Mitz Pantic wrote this article and others for <http://www.tips4pc.com> Browse **Tips4pc.com** for more articles that are written in an easy to understand interface and **FREE computer help**.

You can also visit her Australian Ebay store [Fantastic Bits 24 7](#).

**This article is free to re-produce providing that the author's bio is included and the website links are still clickable...**